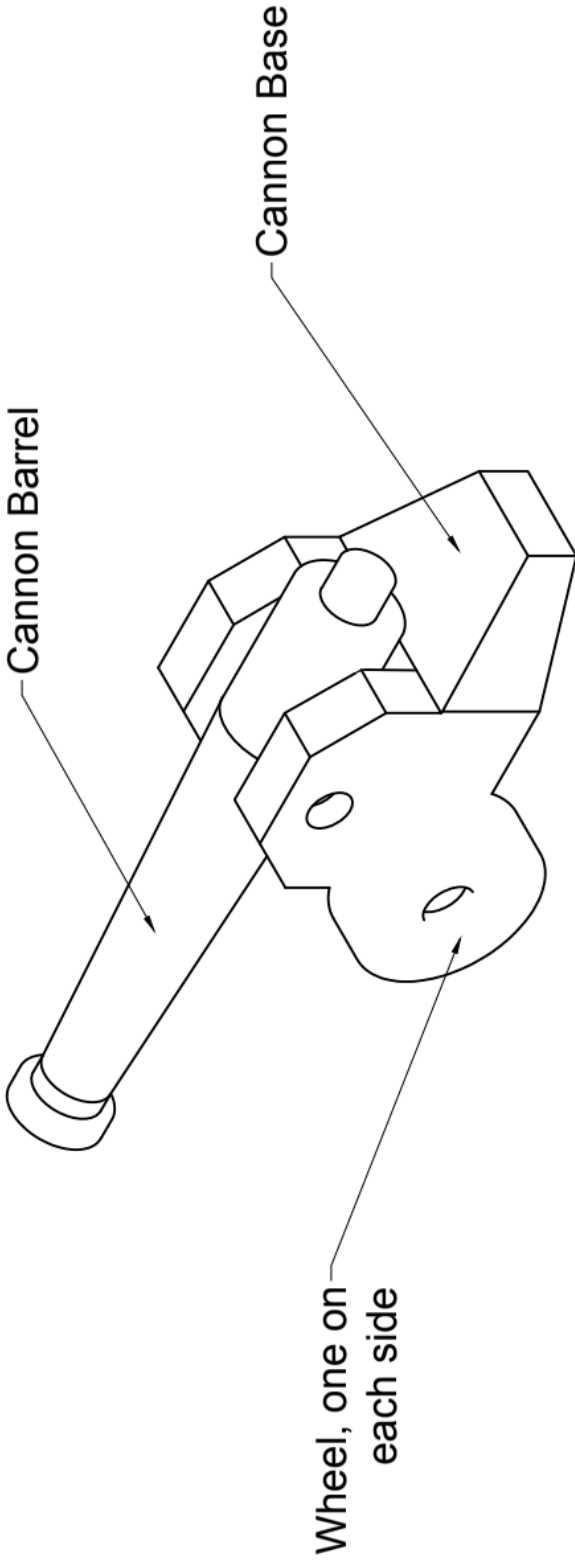


Cut list for Cannon Project

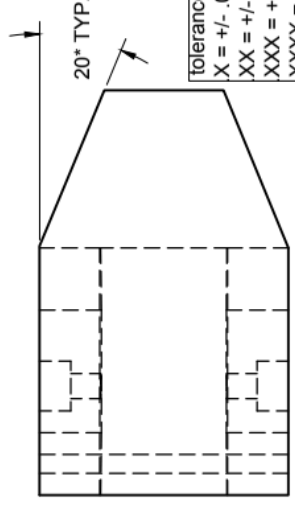
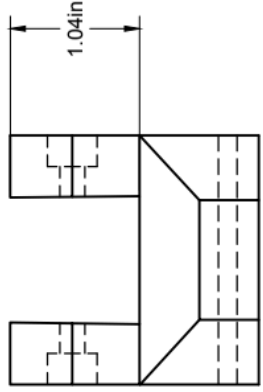
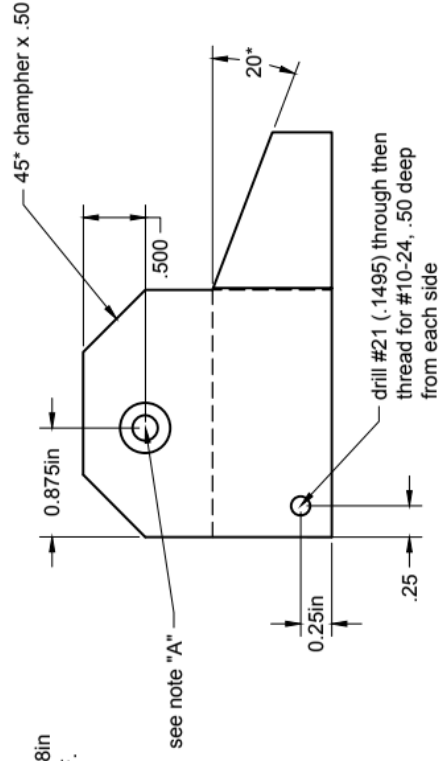
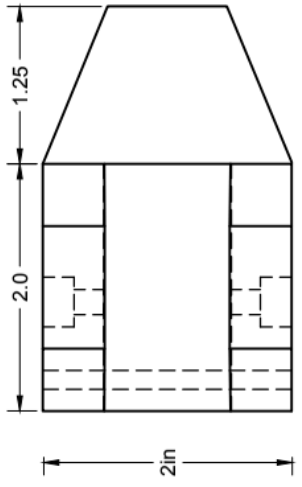
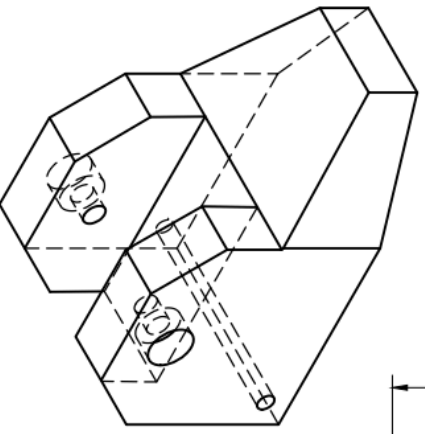
Aluminum – 2" x 2" x 3.625" (1 piece)

Aluminum, brass or plastic – 2" x 2" x .50" (2 pieces)

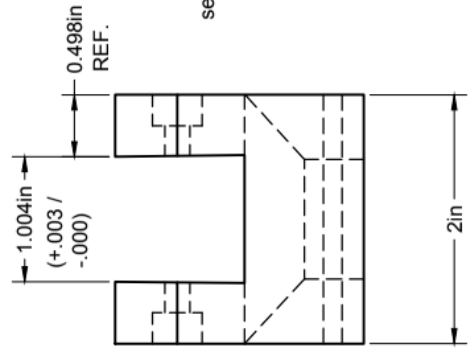
Aluminum or Brass – 1" diameter x 6.50" long



PROJECT		Cannon			
TITLE		Assembly Drawing			
APPROVED	SIZE	CODE	DWG NO	REV	
CHECKED					
DRAWN	SCALE	WEIGHT	SHEET		

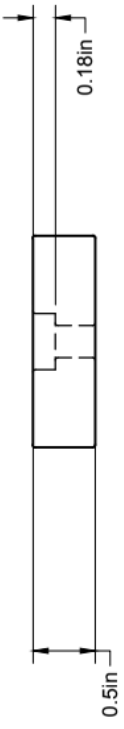
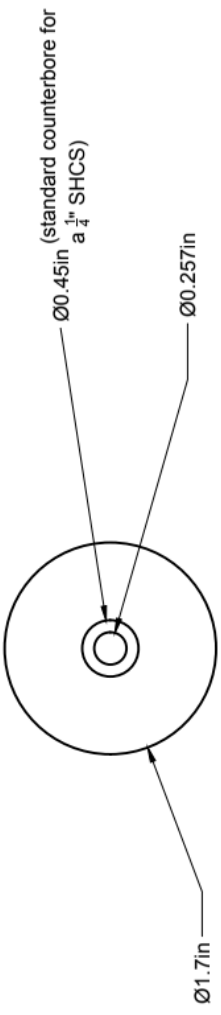
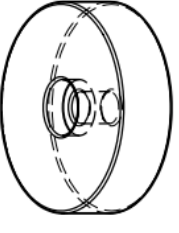


NOTE "A"
 Drill .201 DIA hole through both ears. Counterbore for a #10 SHCS .25 deep as shown



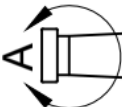
remove all burrs and sharp edges

Tolerances unless otherwise noted		PROJECT	
X = +/- .015		cannon	
XX = +/- .01		TITLE	
XXX = +/- .005		base, make from Aluminum	
XXXX = +/- .0005		part #1	
units are inches		SIZE	DWG NO
APPROVED	CHECKED	SCALE	WEIGHT
DRAWN		SHEET	
SPC 11/6/2015		REV	

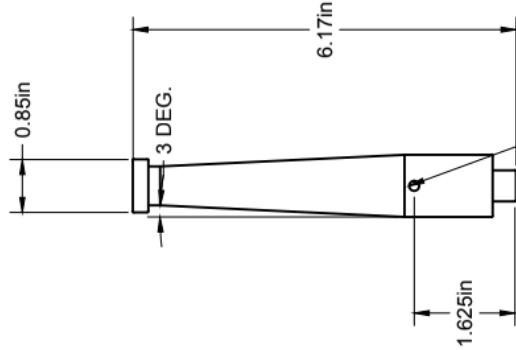


remove all burrs and sharp edges

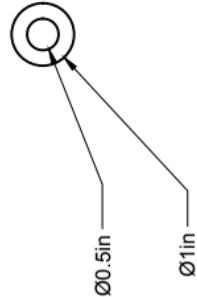
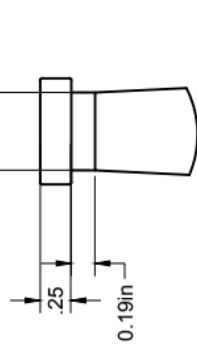
Tolerances unless otherwise noted		PROJECT		Cannon	
.X = +/- .015		TITLE		Wheel, 2 pieces are required make from ALuminum, Brass or Plastic	
.XX = +/- .01		SIZE		CODE	DWG NO
.XXX = +/- .005		CHECKED		Part #2	
.XXXX = +/- .0005		DRAWN		SCALE	WEIGHT
Units are inches		SPEC, 11/06/2015		SHEET	
APPROVED		SCALE		SHEET	
CHECKED		SCALE		SHEET	
DRAWN		SCALE		SHEET	



Ø0.39in
drill hole approx. 3.5"
deep



Drill #21 through then tap
for #10-32 thread, .3" deep
from each side



DETAIL A SCALE 1:1

remove all burrs and sharp edges

Tolerances unless otherwise noted

- X = +/- .015
- .XX = +/- .01
- .XXX = +/- .005
- .XXXX = +/- .0005

units are inches

PROJECT		Cannon	
TITLE		Cannon Barrel, make from Brass or Aluminum part #3	
APPROVED	SIZE	CODE	DWG NO
CHECKED	SCALE		REV
DRAWN	spc 11/9/2015	WEIGHT	SHEET